

Mmakgatle	70	119	19	113	36	4	363
Mohlalaotoane	506	1074	186	1125	549	153	3593
Selebaneng	34	67	16	67	24	8	217
Doornspruit	92	192	30	154	76	2	546
Malebitsa	471	1229	250	1094	340	61	3445
Matilo	80	102	9	123	30	3	347
Driefontein	302	765	108	622	197	19	2013
Seriteng	192	332	74	298	142	25	1063
Mamphokgo	724	1442	289	1616	632	51	4753
Mmotwaneng	249	307	61	316	148	31	1112
Mabitsi B	66	146	27	105	65	13	422
Uitvlugt	769	1627	246	1335	278	27	4283
Rathoke	740	1578	286	1342	505	104	4554
Mabitsi A	131	503	89	466	155	32	1375
Vaalbank	148	302	47	262	106	-	866
Keerom	-	-	1	2	2	-	5
Metsanangwana	551	741	130	691	262	75	2450
Doornlaagte	227	438	97	418	150	23	1353
Masanteng	19	15	5	12	10	-	61
Paardenzoek	9	19	5	18	6	1	57
Spitspunt	323	944	175	711	185	23	2361
Moeding	118	226	50	221	98	9	722
Moganyaka	382	806	138	914	392	51	2683
Manapsane	457	1521	311	1688	695	96	4767
Leeufontein	775	1877	328	2554	1248	374	7157
Phuleng	38	72	12	101	23	5	253
GaMakgatle	35	92	21	110	57	2	317
Ngwalemong	178	539	79	608	213	24	1642
Marble Hall	159	338	87	572	594	550	2300
GaMakena	66	86	33	116	55	4	361
Matlerekeng	615	1374	280	1343	453	38	4103
Tshikanosi	202	585	103	460	166	45	1561
Matlala							
Ramoshebo	549	989	141	1062	490	48	3279
Grand Total	16077	33201	6814	34141	13150	3228	106610

Source: Census 2011

### 2.1.5 Employment Profile

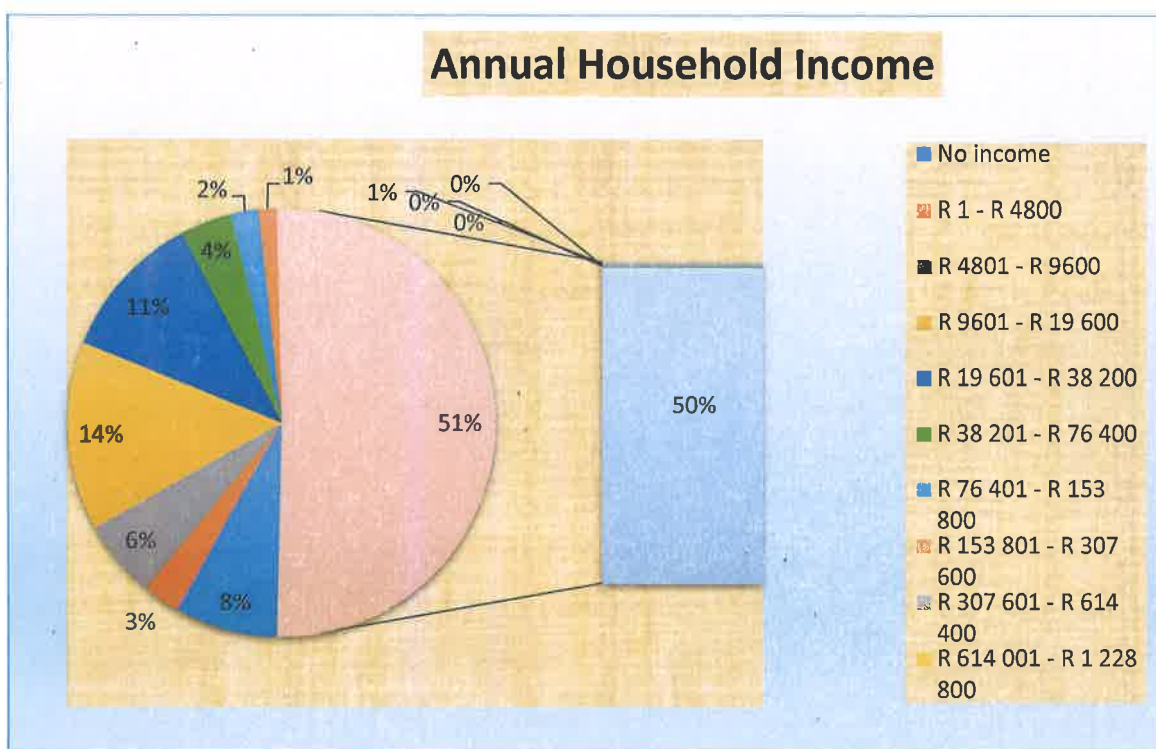
Table depicts employment status

Employed	18345
Unemployed	12943
Discouraged work-seeker	5299
Other not economically active	34572
Age less than 15 years	-
Not applicable	52470

### 2.1.6 Annual Household Income

INCOME CATEGORY	No. of household
No income	5240
R 1 – R 4800	2023
R 4801 – R 9600	3794

R 9601 – R 19 600	9422
R 19 601 – R 38 200	7503
R 38 201 – R 76 400	2744
R 76 401 – R 153 800	1417
R 153 801 – R 307 600	989
R 307 601 – R 614 400	435
R 614 001 – R 1 228 800	172
R 1 228 801 – R 2 457 600	104
R 2 457 601 or more	92
<b>Grand Total</b>	<b>33 936</b>



#### 2.1.7 People with Disabilities

Disability	Grand total
Seeing	9592
Hearing	4334
Communication	3821
Physical	5532
Intellectual	6674
Multiple	8576
Total	38 529

SOURCE: STATSSA 2011,

### **Background**

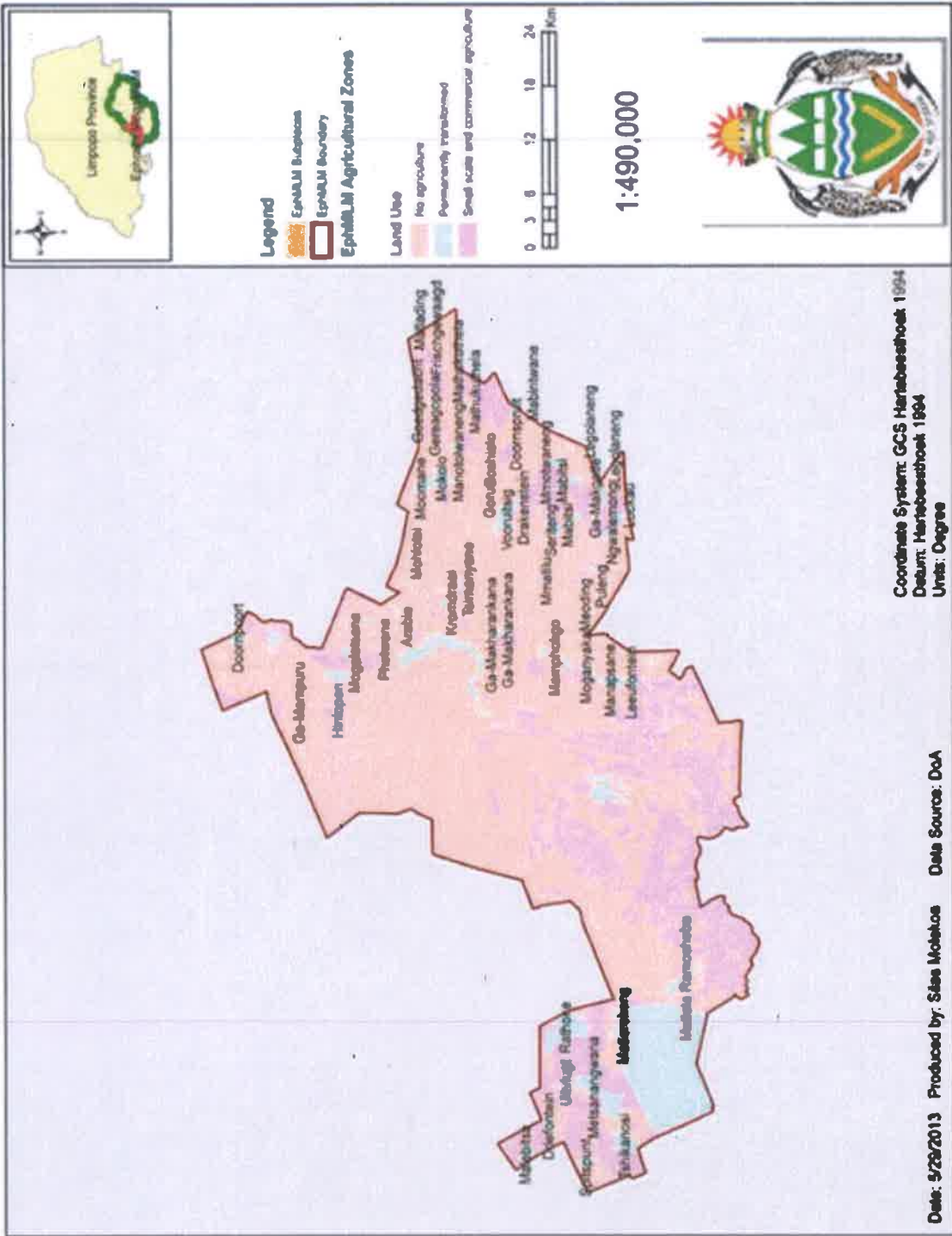
Ephraim Mogale local municipality borders Makhuduthamaga local municipality in the south, Elias Motswaledi local municipality in the east, Lepelle Nkumpi local municipality in Capricorn District, Mookgopong local municipality in Waterberg and Mpumalanga's Dr JS Moroka local municipality. It is situated about 150km from Polokwane, 100km from Mokopane, 160km from Pretoria, and 250km from Mbombela. The municipality is the second smallest of the five local municipalities in the district, constituting 14.4% of the area with 1911.07 square kilometers of the district's 13 264 square kilometers. The area covers 16 wards. Land ownership is mostly traditional and the municipality is predominantly rural with about 56 settlements, most of which are villages.

### **3.1 Spatial Rationale**

The municipality is a major producer of citrus and table grapes. Cotton and vegetable production is also substantial. Cattle ownership among subsistence farmers is significant. Production areas are scenically attractive and, together with the Flag Boshielo Dam, provide supply side opportunities for tourism development. The Schuinsdraai Nature Reserve, which is adjacent to Flag Boshielo Dam, adds to this opportunity. Mining activity includes dolomite and dimension stone. Marble Hall town has a very large, but underutilized industrial park. The only manufacturer of note is McCains and Tiger Brand Foods vegetable processing. Supplementary tenants in the industrial park are mostly distributors and businesses that repair motor vehicles and other equipment. The local construction industry is very small, but is growing rapidly. Wholesale and retail trade development has always been overshadowed by facilities that are available in the adjacent Groblersdal. A large network of informal traders operates throughout the municipal area.

#### **3.1.1 Settlement Patterns / Hierarchy of Settlements**

The configuration of the municipal area and the existing spatial pattern (topography, population distribution and sprawl) together with causal factors (land ownership, established land uses) are impediments to the successful implementation of a Development Strategy to achieve the four developmental outcomes proposed in the White Paper on Local Government. Restricted access to land by the Municipality due to inhibitive land cost (privately owned land) and statutory deterrents (state – owned land under tribal custodianship) would exacerbate attempts by the Council to orchestrate and encourage the development of a beneficial spatial pattern within the municipal area.



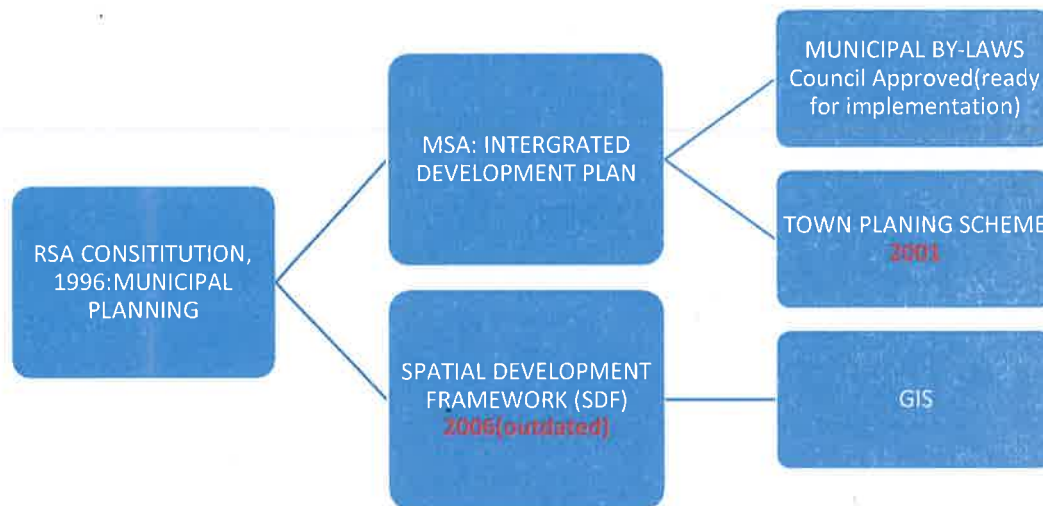
### 3.1.3 The settlement hierarchy of the municipality is as follows

Type	Characteristics	Areas
First Order Settlements (Growth Points) [GP]	It is individual settlements (e.g. towns/villages) or a group of settlements located relatively close to each other where meaningful economic, social and institutional activities, and in most instances a substantial number of people are grouped together. These growth points seem to have a natural growth potential but some do not develop to their optimum potential due to the fact that capital investments are made on an ad hoc basis without any long-term strategy for the growth point and/or the area as a whole.	Marble Hall
<ul style="list-style-type: none"> <li>• Second order Settlements (Population Concentration points) [PCP]</li> </ul>	Settlements/deemed as townships however have not yet been proclaimed.	Leeuwfontein, Moganyaka North and South, Mamphokgo North and South, as well as Manapyane (with an estimated 2006 population to which 21555 pop.) forms part of the "Leeuwfontein Population Concentration Point
<ul style="list-style-type: none"> <li>• Third Order Settlements (Local Service Points) [LSP]</li> </ul>		Ragaphela was identified as a Local Service Point
<ul style="list-style-type: none"> <li>• Fourth Order Settlements (Population concentration point]</li> </ul>		Ditholong, Letebejane, Tsimanyane area is Population Concentration Point.

### 3.1.4 Land Use Composition and Management tools

Ephraim Mogale is characterized by clearly identifiable land use areas which predominately: extensive agriculture areas, dominated by the growing of citrus fruit; game reserves and nature reserves, including game lodges; sprawling rural residential villages. Essentially the land use composition is residential, agricultural, game lodges/nature land use activities and including two mines in Marble Hall town.

Land Use Management scheme determines and regulates the use and development of the land in the municipal area in accordance with Town-planning and Town ordinance (Ordinance no.15 of 1986) and Spatial Land Use Planning Management Act12, 2013.



### 3.1.5 Spatial Development Growth Points Areas

Provincial Growth	District Growth	Municipal Growth
None	Marble –Hall	Leeuwfontein
		Elandskraal
		Zamekomst

### 3.1.6 Land Claims and their Socio-Economic Implications

Land claims have been made in respect of Schuinsdraai nature reserve and representatives of claimants have been included in the PAC for second phase development of the reserve by DEAT. The Flag Boshielo Dam which can provide supply side opportunities for tourism development. The Schuinsdraai Nature Reserve, which is adjacent to Flag Boshielo Dam, adds to this opportunity. Further opportunity is the industrial land available in Marble Hall town which is in ownership of the municipality.

### 3.1.7 Illegal Occupation of land/ Informal Settlements

Marble Hall town has been invade by informal dwellers on the property description Remainder of the farm Loskop Noord 12-JS (direct north-east of Marble Hall town). The municipality in currently engaging the department of public works in possible relocations/evictions of the dwellers. Large areas of land (75%) in Marble Hall is private owned and not easily accessible for development. State-Owned land is mostly under the custodianship of traditional Authorities

### Spatial Challenges

- Scattered settlements are becoming too costly to provide services.
- Marble Hall which is the economic hub is located far away from the villages and it is not easily accessible by the poor.
- The apartheid residential settlement layout is still very much evident with sprawling rural villages situated in traditional authority areas located far away from employment opportunities, consequently it becomes too costly for people to travel to their working places.
- Large areas of land in Marble Hall are privately owned and not easily accessible for development.
- State-Owned land is mostly under the custodianship of traditional Authorities.

### Opportunities

Ephraim Mogale is characterized by clearly identifiable land use areas, including: extensive agriculture areas, predominated by the growing of citrus fruit; game reserves and nature reserves, including game lodges; sprawling rural residential villages.

### 3.1.7 SWOT Analysis

#### KPA 1 Spatial Rationale

STRENGTHS	WEAKNESSES
<p>Planning and economic development</p>	<ul style="list-style-type: none"> <li>• Land Ownership and Land Use Management</li> <li>• Scattered settlement thus become too cost to provide services.</li> <li>• Marble Hall which is the economic hub is located far away from the village and it is not easily accessible by the poor.</li> <li>• The apartheid residential is still very much evident with sprawling rural villages situated in traditional authority areas located far away from employment opportunities, thus become too costly for people to travel to their working places</li> <li>• Large areas of land in Marble Hall is private owned and not easily accessible for development.</li> <li>• State-Owned land is mostly under the custodianship of traditional Authorities</li> </ul>
OPPORTUNITIES	THREATS
<ul style="list-style-type: none"> <li>• Ensure lawful security of tenure</li> <li>• Ephraim Mogale is characterized by clearly identifiable land use areas, including: extensive agriculture areas, predominated by the growing of citrus fruit; game reserves and nature reserves, including game lodges; sprawling rural residential villages</li> </ul>	<p>To implement land use management system once in place</p>

#### 4.1. Environmental Analysis

##### 4.1.1 Climate

The average temperatures show moderate fluctuation with average summer temperature 23°C, with a maximum of 28°C and a minimum of 18°C. In winter the average is 13, 5°C with a maximum of 20°C and a minimum of 7°C as measured at the Sekhukhune Land Weather Station.

##### 4.1.2. LAND FORM

###### Geology

The south-western part of the municipal area is underlain by the acid and intermediate intrusive rocks of the Waterberg Group, as well as small areas of mafic and ultramafic formations. The western portion is underlain by extensive Karoo Supergroup formations, principally basalts of the Lebombo Group and Clarens Formation sandstones, with smaller areas of Eccca Group shales, siltstones and mudstones. The central and eastern portions are underlain by a variety of rocks of the Bushveld igneous Complex. The most important of these are the Lebowa Granite suite, with outcrops of the Rashoop Granophyre Suite, followed by rocks of the Rustenburg Layered Suite further to the north and east. Much of the northern part of the area is underlain by rocks of the Transvaal Sequence, with the silicified sandstones and quartzites of the Black Reef Quartzite Formation being very prominent, together with Chuniespoort dolomites and Pretoria group shales, hornfels and quartzites.

According to Soils occurring in the municipal area can be divided into the following groups: In the west: Shallow to moderately deep sandy-clay loam soils on flat and undulating terrain overlying rocks of the Eccca Group, principally shales and silicified sandstones; In the east: Deep, black, blocky vertisols of the Springbok Flats; Moderate to deep sandy loam soils lining long stretches of the Olifants River valley in its middle reaches.

Most of the soils are suitable for commercial agriculture when sufficient water is available. Virtually all of the areas with suitable soils, particularly the area downstream of the Loskop and Flag Boshielo dams, are contained within the jurisdiction of formal irrigation boards or Government Water Control Areas. Further away from the main river channels, land use is given over to small- and medium-scale livestock farming operations. A relatively wide variety of crops are produced on the irrigated and rain-fed areas, primarily maize, wheat, sorghum, cotton, tobacco, Lucerne, potatoes, vegetables, sunflowers and soya bean.

###### Topography

To the south-west of the municipal area the Olifants River is located on an open floodplain area and to the north the river is located in a valley surrounded by the Strydpoort Mountains (parallel hills and lowlands). Strips of erosion can be found in the valleys alongside most of the perennial and non-perennial rivers

###### Water Sources

###### Water

Due to the predominantly rural character of the municipality's area of jurisdiction there is no bulk water provided in most of the villages in Moutse West. Water is provided by means of water tanker trucks and boreholes. Provision has been made for bulk reticulation and cost recovery in Moutse to be implemented in 2011/12 according to water sector program, PGDS targets.

One very large impoundment on the Olifants River, the Flag Boshielo (Arabie) Dam, provides water supplies to numerous small towns and settlements in the sub-catchment, as well as large volumes of water for irrigation schemes along both banks of the Olifants River. Nine other medium-sized dams are also located in this sub-catchment and supply water for domestic use and for irrigation. Many of the mines and industries in this sub-catchment, as well as numerous small and large settlements, rely on water supplied from these ten dams, or use local boreholes or direct run-of-river abstraction from



perennial rivers and streams. There are also over 500 small farm dams located in this sub-catchment and these trap water for domestic purposes and for limited areas of small-scale irrigation, as well as livestock watering.

### **Overgrazing**

The major influencing factor in this regard is the overstocking by practicing farmers and then it became a situation where by no one takes responsibility of the pieces of land they all used for grazing. Lack of land ownership in settlement areas which results mainly in traditional farming methods and overgrazing.

### **Soil erosion**

Traditional farming methods give rise to possible erosion. Strips of erosion can be found in the valleys alongside most of the perennial and non-perennial rivers. Major erosion in areas in Moutse west, Elandskraal, Leeufontein. There is no control of plants and trees and deforestation – land degradation is identified as a major environmental problem with erosion often the result.

### **Veld fires**

Uncontrolled fires are an element of concern as far as the environment is concerned. The extent of these conditions is high with flat areas having a medium magnitude rate. Especially in winter months 'smoky' air due to veld fires is environmentally unhealthy. These also influence major risks such as drought and flooding.

## **4.1.3 POLLUTION**

### **4.1.3.1 Water pollution**

The following activities can be expected to have an impact on water resources in the Middle Olifants sub-catchment:

- Landfills and uncontrolled solid waste disposal sites at all towns and larger settlements;
  - Disposal of liquid (domestic, light and heavy industrial) effluent at all towns;
  - Moderate volumes of runoff from towns, as well as all other urbanized areas;
  - Non-point domestic effluent from numerous small settlements and farms;
  - Minor non-point impact from non-intensive commercial or subsistence agriculture;
  - Non-point impact of agricultural return flows from intensive irrigation areas; and
  - Litter and domestic garbage discarded alongside the many roads that traverse the sub-catchment.
- Groundwater pollution can be caused by septic tanks and French drains mainly on commercial farms. Pit latrines at settlements and villages can also contaminate ground water especially in Moutse west area where Geotechnical conditions are sandy and results in seepage from latrines into groundwater resources.

### **4.1.3.2 Air Quality and Pollution**

Air pollution resulting from the use of fire wood, coal and paraffin used for cooking energy purposes impact on air quality (pollution) also on biodiversity (woodcutting) and dust from gravel roads have also been identified as environmental problems (albeit with a lower significance). Problems regarding mine dust in Marble Hall might lead to respiratory related diseases.

### **4.1.3.3 Surface Pollution**

Surface pollution is caused by the spraying of crops with pesticides and the lack of proper management thereof. Graveyard establishment without considering geotechnical circumstances and conducting assessments will also contribute to pollution of soil and groundwater. Uncontrolled littering and disposal of waste along roads and open space are also creating serious surface pollution with high potential unhealthy conditions to communities. Challenges with mine dust from vehicles transporting mine products do occur in residential - and business areas and it can contribute to illnesses such as silicosis and needs to be addressed through consultation with the mines. The challenges for the above is the capacity to prevent and monitor pollution and the willingness of Private sector to assist in minimising pollution.

### **Chemical spills and hazardous accidents**

Uncontrolled disposal of medical waste from hospitals and clinics may result in hazardous accidents. Although these segment of waste is collected by specific medical waste removal companies it is still a huge risk.

#### **4.1.4 Other Environmental issues**

There is no classified heritage sites in the Municipal area and no significant natural resources such as fenced wetlands

The Schuinsdraai Nature Reserve is located to the west and adjacent to Flag Boshielo dam and extends to over 9035 hectares, Leswena Nature Reserve located to the eastern side is to an extend of 1488 hectares forms part of eco-tourism in the area together with the Flag Boshielo dam

There is no environmental structure coordinating environmental issues in the Municipality but the Sekhukhune District Environmental Forum assists with the coordination of all environmental activities in the District. Main stakeholders are Provincial Environmental departments, District municipality and Local Municipalities

Environmental awareness campaigns are still a challenge but the environmental calendar days are celebrated in collaboration with the Provincial Department or District Municipality. The greening of the municipal area is ongoing with tree planting at schools and clinics and a landscaping master plan was developed to assist in overall urban renewal.

All other chemical spills and related hazardous incidents is reported to the disaster management unit of the Sekhukhune District Municipality which deals with it in the correct and appropriate manner. A disaster management officer was appointed and certain issues will be dealt with at the local municipality.

## **4.2 Social Analysis**

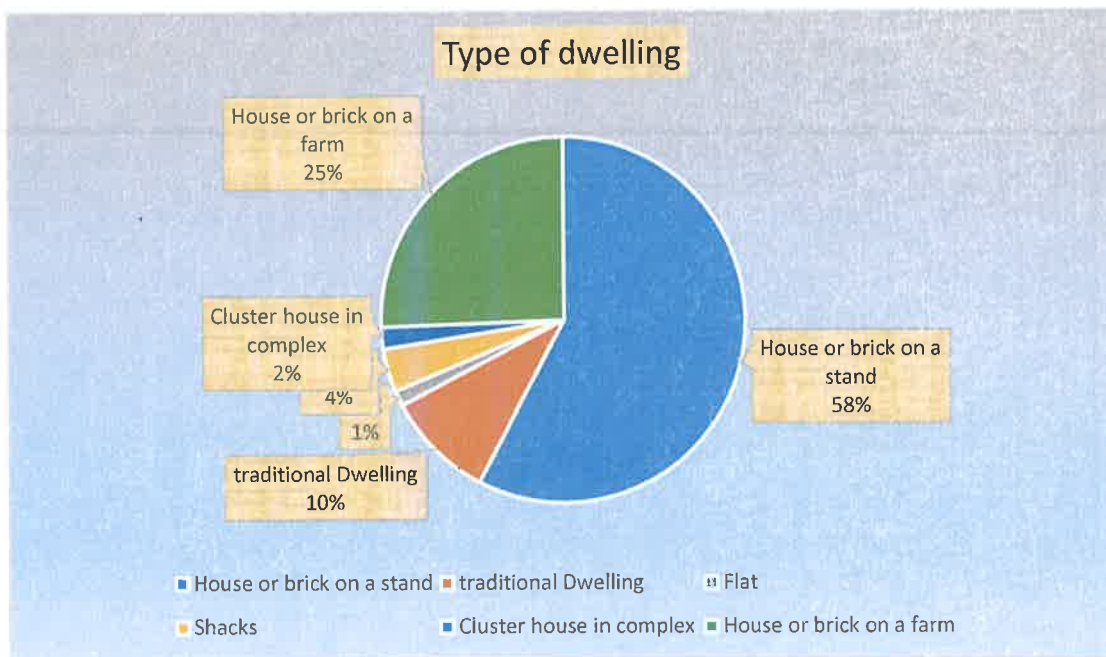
### **Background**

The historic imbalances in South African History resulted in the majority of our people living without land and housing, access to safe water sanitation for all, affordable and sustainable energy sources, illiteracy, poor quality education and training, poor and inaccessible health services. Here is the socio-analytic reflection of EPMLM.

#### **4.2.1 Integrated and sustainable Human Settlements**

Housing is a mandate of COGHSTA and the municipality plays a facilitation role between the community and the department. 7250 (22.47%) of all households are residing in a formal dwelling and 78.53% resides in either informal or traditional or traditional dwelling.

**4.2.1.1 The following chart reflects the type of dwelling**



**4.2.1.2 Housing backlog**

The housing backlog is estimated at 7700 households which exists mainly in rural settlement. The Municipality adopted a housing chapter which indicates the backlog and outlines how the backlog will be eradicated.

**4.2.1.3 Challenges**

- None availability of land in Marble Hall (economic hub) to build low costing housing as an attempt to build integrated human settlement.
- Poor quality of some RDP houses

**4.2.1.4 Informal Settlement**

Currently there are no informal settlements within the municipality.

**4.2.2 Health and Social Development**

The challenge of the health sector in South Africa is to develop a unified national health system capable of delivering quality health care to all citizens efficiently and a caring environment. Overall health care expenditure and access to health care in the municipality remain poor. 33% of the communities are within 20km from hospitals and 67% outside 20km, 47% of the communities have access to clinics within 5km and the majority (53%) is more than 5km away from clinics

**4.2.2.1 The following table indicates the Health facilities available in the municipality.**

Facility	Standard Per households	Number of Households	Existing Nr
Hospital	1 : 10 000	31971	1
Health Centre	1 : 5 000	31971	2
Clinic	1 : 2 000	31971	11
Mobile Clinics	1 : 2 000	31971	28

#### 4.2.2.2. Social Welfare

##### Available Welfare Facilities and Services

Old age home	Child care	Disabled	Pension pay point	Services points
1	0	1	43	16

#### 4.2.2.3 Prevalence range of diseases

The municipality implemented the decentralised response to HIV & AIDS, having joined the CMRA support project in June 2007 as the 7<sup>th</sup> pilot site. The objectives of the municipality project were: (a) to establish a Local AIDS Committee on HIV & AIDS with a clear objective, mandate and responsibility. The municipality set aside budget for Awareness programme in order to increase the level of awareness to the community related to HIV & AIDS issues, and to advise the municipality on how to establish and/strengthen the ward based multispectral municipal HIV & AIDS platform involving all stakeholders (governmental and non-governmental) in the field of HIV & AIDS.

The municipality sit on the District Aids Council (DAC), which is a body that coordinates and oversee the issues on HIV/AIDS in the entire District. Preparation of departmental action plans on HIV & AIDS has been compiled. There is a good understanding. The LAC had been established and will be reporting directly to the mayor.

The project has already contributed significantly to raising awareness in the municipality with regard to mainstreaming of HIV & AIDS. HIV & AIDS is rife, with a prevalence rate of 18.1% in 2013 in Sekhukhune District. Limited access to basic services, unemployment, poverty and lack of access to primary health care due to the vastness and rural nature of the Municipality are some of the risk factors that affect the spread of HIV & AIDS.

The municipality has appointed one HIV & AIDS Coordinator who will anchor the programme within the municipality and champion HIV & AIDS issues within the municipality. The CMRA Project Coordinator should be working hand-in-hand with the municipal coordinator to impart valuable skills and experience to ensure sustainability. Resources (material and human) should be made available to support the activities of the LAC, and for the municipality to increase on the level of awareness in its communities.

#### 4.2.3 Safety and Security

The South African Police service (SAPS) is responsible for the safety and security in the municipality. The most common crimes in the area are assault and theft. There are Community Policing Forums (CPFs) and the Community Safety Forum was recently launched. For the municipality to achieve economic growth, safety and security is required to attract investments and thus create jobs and poverty alleviation. The municipality should jointly with the Department of Safety and Security, develop and implement crime prevention strategy.

##### 4.2.3.1 The following table indicates the facilities available in respect of police stations in the municipality.

##### Police and Magisterial Services Rendered

Ward	Former TLC	Location	Facility
1,2,3,5 & 6	Moutse 1		No Police station (Main PS in Dennilton and satellite in Matlerekeng)
4	Moutse 1	Matlerekeng	Satellite Police Station with 16 personnel
7	Marble Hall	Marble Hall	Police Station with cells and courtroom.6 Private Security Services.

8	Moganyaka/Leeuwfontein		No formal and local services.
9	Moganyaka/Leeuwfontein		No formal and local services.
10	Hlogotlou/Lepelle		No formal and local services.
11	Hlogotlou/Lepelle/Nebo		Satellite Police Station at Rakgwadi
12	Hlogotlou/Lepelle		No local Police Station
13	Middle Lepelle		
14	Middle Lepelle		No formal local services.
15	Middle Lepelle	Elandskraal	Police Station at Elandskraal
16	Middle Lepelle		

The challenges in respect of above are to move the Marble Hall police jurisdiction to include the areas outside Marble Hall police jurisdiction.

#### 4.2.4 Education

There are 80 primary schools and 45 secondary schools with approximately 80 000 learners. Marble Hall which is the economic hub of the municipality has one public secondary school, the teacher pupil ratio is 1:60 on average in primary schools and 1:55 in secondary schools. Although the norm is 1:35 in secondary schools and 1:4 in primary schools, learner: teacher ratios are substantially higher than the national norm.

#### 4.2.5 Sports, Arts and Culture

Sports and Recreational activities are coordinated by the Department of Sports, Arts and Culture in liaison with the municipality. The development of sports in the municipality is still a challenge at the ward level. Sports council was established in the municipality which co-ordinates sporting activities (comprise by community members, Department of sports and officials from the municipality). The development of sports in the municipality is still a challenge. The municipality has only two stadia namely Elandskraal and Malebitsa. There are also 3 hubs which are sponsored by the department of Sports, Arts and Culture namely: Elandskraal, Malebitsa and Moganyaka Arts and Culture Councils is also established.

#### 4.2.6 Post Offices and Telecommunication Services

Most of residents have access to telecommunication by using mobile phones. Telkom has minimal infrastructure with regard to house connections'. Postal services is also minimal

Formal Post Offices	Mobile Post Offices	Backlog	Challenges
2 (Marble Hall, Leeufontein & Elandskraal)	11 (Xipame, Rakgwadi, Tsimanyane, Matlelerekeng, Manapyane, Regae, Elandskraal, Matlala Ramoshebo, Strydmag and Dichoeung)	52 Villages have no access to post-office facilities.	Some post offices had to close down due to the strike that was encountered last year

#### 4.2.7 Cemeteries and Cremation

Almost all the villages have cemeteries. There is no crematoria. A new cemetery in Marble-Hall Town was developed. There is a need for extension of cemeteries at Ward 2 (Rathoke) and Elandskraal

#### 4.2.8 Social and Environmental SWOT

Strengths	Weaknesses
<ul style="list-style-type: none"> <li>• Most households have access to at least RDP housing standards</li> <li>• Access to social grants and services</li> </ul>	<ul style="list-style-type: none"> <li>• Shortage of some social facilities.</li> </ul>
Opportunities	Threats
<ul style="list-style-type: none"> <li>• Intergovernmental relations.</li> </ul>	<ul style="list-style-type: none"> <li>• Service delivery protests</li> </ul>

#### 4.3 Economic Development Analysis

##### Background

To undertake a proper analysis of the political economy of the district, it becomes important to consider the background of the South African economy in general. Thus, the district economy needs to be viewed as an integral part of the provincial economy that is linked to the national. The national economy is part of the South African regional economy within the world economy. Thus Ephraim Mogale Local Municipality as part of Sekhukhune district is a constituent to the global economy positioned to take advantage of its comparative strengths in its relation to the other regions of the world

##### 4.3.1 The Structure of the Economy

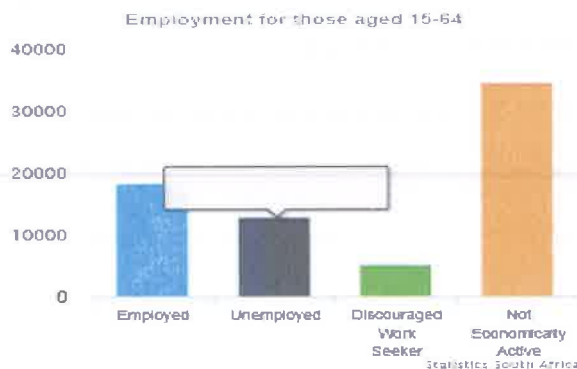
The municipality is a major producer of citrus and table grapes. Cotton and vegetable production is also substantial. Cattle ownership among subsistence farmers is significant. Production areas are scenically attractive and, together with the Flag Boshielo Dam; provide supply side opportunities for tourism development. The Schuinsdraai Nature Reserve, which is adjacent to Flag Boshielo Dam, adds to this opportunity. Mining activity includes dolomite and dimension stone. Marble Hall town has a very large, but underutilized industrial park. The only manufacturer of note is McCain's and Tiger Brand Foods vegetable processing. Other tenants in the industrial park are mostly distributors and businesses that repair motor vehicles and other equipment. The local construction industry is very small, but is growing rapidly. Wholesale and retail trade development has always been overshadowed by facilities that are available in the adjacent Groblersdal. A large network of informal traders operates throughout the municipal area.

##### 4.3.2 Key Economic Sectors

The Municipality has a relatively small economy, contributing only 1% to the provincial value of production. 41.4% of the 31 294 are economically active (employed or unemployed but looking for work) people in the municipality are unemployed. Among the economically active youth (15-34 years) in the area, almost half (48, 8%) are unemployed. (Source Stats S.A., Census 2011)

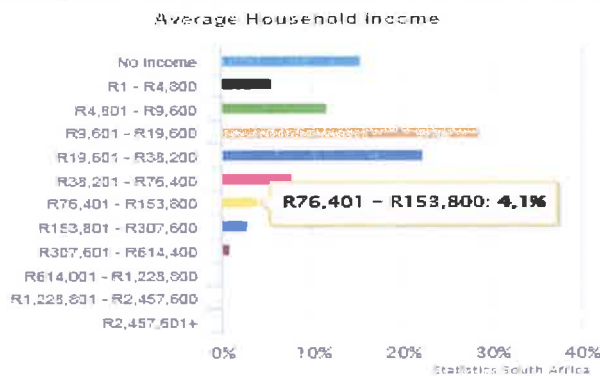
##### 4.3.2.1 Employment Sectors

In the formal sector	12114
In the informal sector	3073
Private household	2640
Do not know	524
<b>Grand Total</b>	<b>18350</b>



The level of unemployment remain relatively higher than the national rate as almost half of the youth population of the municipality is unemployed with the rate of 48,8% and this results in the higher dependency rate of 73,3% which demand more government intervention.

The majority of the employed population of the municipality remains the low income earners who receive average income between R9600-19600 per annum. This economic situation clearly shows that the municipality remains one amongst the poorest in the country. The income levels are as follows:



#### 4.3.2.2 Development Corridors

Zamenkomst – Rathoke – Malebitsa is seen as a future development corridor with the main growth point at Rathoke. In a north/south direction, the main development corridor of the Greater Marble Hall area, is from Marble Hall to be along the N1 in an eastern direction to Leeuwfontein and then in a northern direction along road D4100, to Matseding. The Roads D4358 and from there along Road D3600 to Elandskraal and ending at Dichoeung in the north, the main proposed east/west development corridor along Road D4285 (Tsimanyane South, Ragaphela, Mmotwaneng) along a priority link road to link up with settlements (for example Maserumule Park) in the adjacent Greater Tubatse Municipality, as well as provide linkage with the north/south corridor.

#### 4.3.3 Competitive and Comparative Advantages

The municipality is designated a "provincial growth point" and is regarded as one of Limpopo's more economically developed local municipalities. Municipal area makes a significant contribution to the District GGP, mainly from public sector, agriculture, agro-processing, wholesale and retail, trade, services and transport, storage and communication sectors. According to STATS SA 2011 census, agriculture is the largest contributor to employment, followed by the public sector, private households, wholesale and trade. The local conditions (business environment) in which the local business operate from provides comparative advantage and disadvantages, favoring certain types of industry sectors.

The municipality boasts a pleasant climate, particularly suitable for table grapes and citrus. Fertile soils, large dams and irrigation provide comparative advantage for production of a variety of crops and livestock. Municipality has limited mineral deposits, mainly marble and lime. The best natural tourism attractions are the Flag Boshielo Dam and the adjacent Schuinsdraai Nature Reserve, which are not yet utilized or developed as major tourist attractions. The municipality has well serviced transport routes in comparison to the rest of the province the existing tourism sector has grown around business visitors, a few game lodges and agricultural educational tours.

#### 4.3.3.1 Local Constraints to Growth

The municipality remains dependent on fiscal allocations from outside the province. The municipality's annual budget is over R 180 million, of which R 227 million is raised within the municipality. Within the municipality 15,664 economically active people are required to support over 100,000 economically un-active people (2001 figures), a statistic that exposes the extent of under-development and dependency. Land ownership is the single biggest constraint to economic growth in the rural areas. The land issue permeates as a constraint through all sectors - from commercial level investment to undermining the scale and viability of emerging farmers and capital appreciation of property values for everyone living in the area. The current regulatory system creates investment uncertainty and slows or blocks the process of investment.

#### 4.3.3.2 Job Creation

Following table indicates jobs created in the municipalities through EPWP and LED initiatives from 2007.

Project	Jobs created		
	Men	Woman	Youth
Water reticulation	303	321	426
Mast lights	30	40	55
SLASH(fertilizer)	3	5	2
Brick paving manufacturing	7	8	5
Sports stadiums /community halls	38	45	17
Bakery and piggery	2	8	0
Bead making jewellery	0	8	7
Tar roads and storm water	305	335	369
Egg production	0	20	5
Organic farming	48	90	0
Cleaning campaign	10	7	3
Community Works Program	112	498	535

#### Economic development projects can be established as follows:

1. Eco tourism - Schuinsdraai Nature Reserve/ Flag Boshielo: Community land Kgoshi Matlala
2. Industries – Marble Hall town: Council owned land
3. Cotton Cluster Initiative- the cluster consist of 5 primary cooperatives with interest of cotton production. The cluster will plant 575 ha on dry land and 115 under irrigation which will create 29 permanent jobs and more than 500 job opportunities.
4. Development of **Moloto Corridor** will contribute to economic growth

#### Policy requirements to support economic development

#### Number of business registration per municipality



#### 4.3.4 SWOT analysis

##### KPA 3 Local Economic Development

Strength	Weaknesses
<ul style="list-style-type: none"><li>• LED Cluster committees are active and holding meetings</li></ul>	<ul style="list-style-type: none"><li>• Hawker stands (bring in new businesses)</li><li>• Proper control over existing hawkers and the maintenance of facilities for hawkers</li></ul>
Opportunities	Threats
<ul style="list-style-type: none"><li>• Growing retail and tourism sectors</li></ul>	<ul style="list-style-type: none"><li>• Water shortage</li></ul>

## Background

The Constitution of the Republic of South Africa in Section 152 (c) indicates that municipalities must “ensure the provision of services to communities in a sustainable manner”. The success of local economic development is tied to the provision of basic and other types of infrastructure to the people. All services under analysis in this section are located in a specific locality (as per SDF) and have potential to boost socio-economic development. Infrastructure analysis focuses on the status quo regarding water supply, sanitation facilities, energy and housing provision, roads and public transport, waste management and telecommunications – all of which underpins socio-economic development and determines people’s quality of life. The provision of adequate municipal infrastructure remains a challenge throughout the municipality.

### 5.1 Water and Sanitation Analysis

Ephraim Mogale local municipality is not a water service authority and water service provider. Sekhukhune District Municipality is the water service authority and water service provider with Lepelle Northern water and Dr J.S Moroka local municipality as water service providers appointed by the district. The water supply is not reliable as the water sources is a challenge. The infrastructure in most villages is on the ground but because of the water source it is not being utilized. The level of water provision in our Municipality is mostly yard connections and RDP standard. The rate of implementation in the provision of sanitation services in our Municipality is very slow and only 9% of households have proper sanitation (waterborne or VIP toilets), and the level of services is urban and RDP standards.

#### 5.1.1 WATER SOURCES AND CATCHMENT

##### Water and sanitation provision:

The function is designated to Sekhukhune District Municipality and Ephraim Mogale municipality plays co-ordination and information facilitation role.

##### Water resources:

- There are 47 Boreholes in the municipality with 13 functional and 34 not functional.
- There are 2 Water Treatment works; Marble Hall 5ML, Flag Boshielo 8ML (Flag Boshielo was augmented by a package plant and 2 boreholes), and Lepelle Northern Water is the service provider appointed by SDM to operate these WTWs.
- Flag Boshielo east supplies 22 villages whereas Flag Boshielo West supplies 24 villages
- Leeufontein is reticulated from a new package plant
- Gareagopola is reticulated from a borehole and a service provider is appointed to refurbish the steel Reservoir. Booster pump and bulk line vandalised
- Moutse West extracts water directly from the JS Moroka Reservoir
- Frischgewaagd is reticulated from a well which pumps into 2 by 10 000 litres jo-jo tanks and 2 jo-jo tanks in the village
- The District municipality is currently in process of finalizing the bulk water system that will cover villages around Moutse area.

### 5.1.2 Access and Backlogs

#### Water backlog:

- ▶ The water backlog is at 43 % (14 592 households)

#### Sanitation provision

- ▶ Sanitation backlog is at 36 % (12 217 households)

Table 1: Domestic water services with infrastructure at or above RDP levels

	SDM	EPHMLM
Total Number of hh	290489	33 936
Total number of hh served	198 272	19 566
Percentage HH Served	68%	57%

Source: Census 2016

### 5.1.3 District Initiatives

The Sekhukhune District has prepared a Water Services Development Plan (WSDP) that was adopted and update in March 2016. The WSDP is currently being implemented and will be reviewed on yearly basis.

The District has developed a bulk water Master Plan. This will assists the District and its implementing agents to achieve its WSDP objectives. The intention is also to investigate alternative technical options for supplying specific areas with water, and to ensure coordination and implementation of water supply infrastructure. Early findings of these studies reveal that groundwater is a major water resource for most Sekhukhune households – and will continue to do so in the future.

#### Access to piped water

Most of the households in the municipality do have access to piped water in the yard or through communal tap.

Table 4: Access to piped water Ephraim Mogale

Access to piped water inside				No access to piped water			
1996	2001	2011	2016	1996	2001	2011	2016
12116	16043	27102	19566	7 385	8 146	5 181	14369

Source: Census (2011)

### SANITATION

The provision of sanitation in Ephraim Mogale faces considerable challenges at present. The situation is more of a concern that it was the cases with water. The municipality has different households that use different types of toilet facilities. In town the municipality uses flushing toilets while in the rural areas there are few households that use flushing toilets. The rest of the population in the rural areas of the municipality use pit latrines.

**Status Quo**

**Table 5: Sanitation level in 2016**

Municipality	Total number of households	% Access RDP and above	% Backlog
Ephraim Mogale	33936	64%	36%

Source: General Household Survey 2016

**Table 6: Breakdown of Sanitation Backlog per Local Municipality A**

Local Municipality	Households	Backlog
Greater Ephraim Mogale	33936	12 217

Source: SDM 3<sup>RD</sup> QUARTER REPORT

**Type of sanitation**

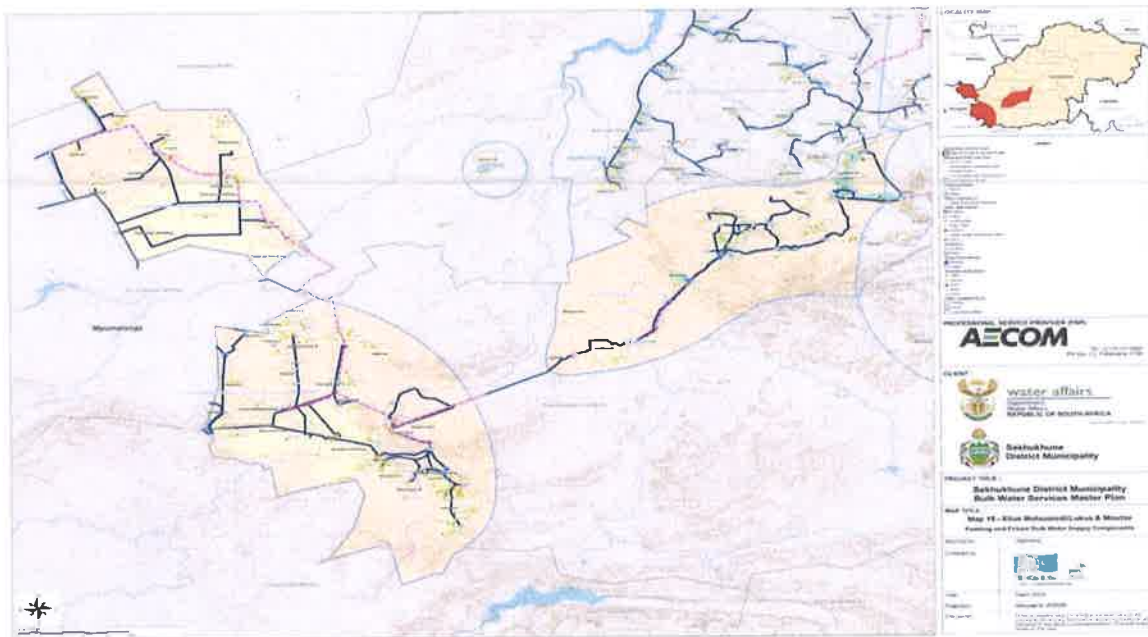
**Table 7: Sanitation Type**

MUNICIPALITY	Flush/chemical toilets			Pit toilets			Bucket			No toilets		
	1996	2001	2011	1996	2001	2011	1996	2001	2011	1996	2001	2011
Ephraim Mogale	1 708	3 758	4 067	15 789	17 162	25 328	151	121	611	1 892	3 147	1 677

Source: Census 2011

**WATER CATCHMENT AND SOURCE IN THE MUNICIPALITY (Flag Boshielo Scheme)**





### Challenges on Water and sanitation

- ▶ Spillages
- ▶ Smell from Sewage Plant
- ▶ Industrial effluent not up to standards(non- Compliance)
- ▶ Tariff for billing or classify as free basic service
- ▶ No provision of water quality reports by WSA
- ▶ No SLA for water services between the WSA and the local Municipality

### 5.3 Free Basic Services

Indigent policy was reviewed by Council on 28 February 2013 which makes provision that an indigent is defined as the total income of all occupants is not more than R2500.00 per household. The Indigent register was compiled in 2015 and is updated as new applications are processed,

Registered indigents receive free basic services for the following services

All registered indigents will receive 50 units of electricity per month free of charge. Unused free electricity units shall not be carried over to the next month. Any meter tampering or dishonesty shall result in the termination of the free service. Challenge is that 2372 was configured but non active have been de-configured now 2372. Average collection rate 1926/month. All villages covered 6975 applications received-R67 085 /month vat inclusive being paid out.

#### 1. Water

All registered and approved indigent consumers will receive the first 6 kilometers of water fully subsidized. Depending on the availability of funds for this purpose, a subsidy, determined at the beginning of every financial year and not more than the applicable tariff for that year, will be applied for the duration of that particular financial year for consumption in excess of 6 kilometers per month. The amount of the subsidy will be determined and approved as part of the tariff policy applicable for the financial year. Challenge is for all indigents to register on the indigent register and to verify compliance with policy.

The District municipality is providing Free Basic Water, it is estimated that 79% of households within Sekhukhune receives free basic water. The district municipality is providing Free Basic Water, it is estimated that 79% of households within Sekhukhune receives free basic water

## 2. Refuse Removal

All registered destitute indigents shall be fully subsidized for refuse removal. All registered indigents shall be subsidized for refuse removal as determined and provided for by the Council in the annual budget from time to time. Depending on the availability of funds for this purpose a subsidy determined at the beginning of every financial year and not more than the applicable tariff for that year, will be applied for the duration of that particular financial year. The amount of the subsidy will be determined and approved as part of the tariff policy applicable for the financial year. Challenge is for all indigents to register on the indigent register and to verify compliance with policy. The compliance with the above-mentioned is still challenge

## 3. Sewerage

All registered destitute indigents shall be fully subsidized for sewerage services. All registered indigents shall be subsidized for sewerage services as determined and provided for by the Council in the annual budget from time to time. Depending on the availability of funds for this purpose a subsidy determined at the beginning of every financial year and not more than the applicable tariff for that year, will be applied for the duration of that particular financial year. The amount of the subsidy will be determined and approved as part of the tariff policy applicable for the financial year.

The challenges are to update the indigent register in order to provide funds to cater for all the indigents

## 5.2 Energy and Electricity

### 5.2.1 Access and Backlogs

The municipality provide electricity reticulation in Marble Hall town and public lighting in the whole municipal area. ESKOM provide electricity reticulation outside the town of Marble Hall. All the villages in the Municipality have been electrified except for Manthole village ( $\pm$ 33 households) that was added to the Municipality at a later stage. The backlog is currently around 3%. In the Municipal license area the service level is 60A and in the ESKOM license area it is at least the basic level of 20A.

**TABLE - Household electricity backlog**

No. of Households	Source of Energy	Coverage	Backlog	% of backlog
33 936 (2016)	Electricity	33 027	909	2.68%

All residential areas within the municipality will be electrified by 2017. The remaining backlog will be new developments.

Some form of public lighting is provided in 22 areas but normally funding limitations don't allow for full coverage of the areas. The number mast required will be around 609 to fully cover all areas. (Based on 40meter high mast with 6 x 1kW fittings)

**TABLE – Public lighting backlog**

No. of Villages	Source of Energy	Coverage	Backlog	% of backlog
56 (2011)	Electricity	22	34	60.71%

## **5.2.2 Sources of Energy**

The main source of energy is Electricity which is supplied by Eskom. It is distributed by Eskom in the Municipal area except in the town of Marble Hall where it is distributed by the Municipality under a license issued by NERSA.

### **5.2.3 Alternative Sources of Energy**

- Wood – due to cost and availability
- Gas – Convenience of use and availability
- Paraffin - Ease of use
- Solar – High initial cost. Mainly geysers and there growth in private Solar Electrical installations. Several big plants have been erected in the Municipal area and linked to the Eskom grid network. Mostly by commercial farmers. A few small installation have been completed in the Municipal license area.

### **Other energy/electricity projects**

Currently there are no other energy/electricity project that are initiated by other government department except electrification of households by Eskom through INEP.

## **5.2.4 Electricity, Energy and public lighting Challenges**

### **Electricity and Energy**

- ▶ High cost of electricity
- ▶ High cost of electrical material
- ▶ New developments in villages not structured – increased costs of electrification
- ▶ Limited funding from INEP
- ▶ Delays in completion of Eskom projects
- ▶ High cost of Solar Equipment and regulations not approved
- ▶ Densification
- ▶ Old equipment
- ▶ Limited budget
- ▶ High cost of new Eskom supply points and very long process
- ▶ Operation & Maintenance plan not revised
- ▶ Main supply to Municipal license area very close to its limit – no capacity for new developments

### **Public lighting**

- ▶ High cost of masts
- ▶ High cost of LED fittings
- ▶ High cost of Eskom connections
- ▶ Long delays in getting Eskom quotations
- ▶ Long delays in construction or installation of supply points by Eskom
- ▶ High cost of electricity
- ▶ Limited budget

### 5.2.5 Free Basic Electricity Status Quo

Currently there is no approved beneficiaries in the town of Marble Hall. All the beneficiaries is therefore in areas being service by ESKOM. There is an agreement with ESKOM to distribute FBE on behalf of the Municipality. The current number of beneficiaries register with ESKOM is 1895 of which an average of 1599 collect tokens per month

### 5.3 ROADS AND STORMWATER DRAINAGE

#### 5.3.1 ACCESS AND BACKLOGS

The only major route running through the municipal area is the N11 which links Marble Hall with Groblersdal to the south, and Mokopane via Roedtan and with the N1 between Polokwane and Pretoria to the west and north. Provincial roads links Marble Hall with the villages to the west and north. Maintenance of these roads by the relevant authorities is inadequate due to lack of manpower and equipment.

The internal roads in the villages are the responsibility of the Municipality. Information regarding exact status of the roads is available from the recent developed roads Master plan. Internal streets within the settlements are generally low quality gravel roads that were never properly planned and constructed. Basically no provision was made for storm water drainage. Some of the formal towns have a few surfaced roads such as Leeuwfontein main roads that are partly tarred, but are deteriorating very quickly. The Majority of roads in our jurisdiction are gravel or dirt

The backlogs are per the Table below

SURFACED ROADS(KM)	GRAVEL / DIRT(KM)	TOTAL
140.5 km	1021.5 km	1162km

#### 5.3.2 ROADS CLASSIFICATION

The classification of roads into different operational systems, functional classes or geometric types is necessary for communication between engineers, administrators and the general public. Classification is the tool by which a complex network of roads can be subdivided into groups having similar characteristics.

A single classification system, satisfactory for all purposes, would be advantageous but has not been found to be practicable. Moreover, in any classification system the division between classes is often arbitrary and, consequently, opinions differ on the best definition of any class. There are various schemes for classifying roads and the class definitions generally vary depending on the purpose of classification.

Roads Agency Limpopo (RAL) completed classification of all roads in the Limpopo province, as per the Road Infrastructure Strategic Framework for South Africa (RISFSA) classification system. This process was concluded in March 2013, and it will be followed by the assignment of responsibilities between spheres of government. The assignment process will be led by National Department of Transport, and its conclusion date is unknown.

The RISFSA classification system classifies road in to 6 classes, in terms of strategic function and description of nature of roads. The classification system is done as per

The RISFSA Road Classification System		
Road Class	Strategic Function	Nature of Roads
Primary Distributor	High mobility roads with limited access for rapid movement of large volumes of	Public Roads: -



The RISFSA Road Classification System

Road Class	Strategic Function	Nature of Roads
	people, raw materials, manufactured goods, and agricultural produce of national importance	Between, through and within regions of national importance; Between, through and within provincial capitals and key cities; Between, through and within major city nodes, which have significant economic or social road traffic; Between South Africa and adjoining countries which have significant national economic or social interaction; Providing access to major freight and passenger terminals including major ports and airports.
Regional Distributor	Relatively high mobility roads with lower levels of access for the movement of large volumes of people, raw materials, manufactured goods, and agricultural produce of regional importance in rural and urban areas	Public roads: - Between and through centers of provincial importance. Between provincial capitals, large towns and municipal administration centers. Between class 1 roads and key centers which have a significant economic, social, tourism or recreational role. Between South Africa and adjoining countries which carry limited economic or social road traffic. For access to transport hubs of regional importance.
District Distributor	Moderate mobility with controlled higher levels of access for the movement of people, raw materials, manufactured goods, agricultural produce in rural and urban areas of regional importance	Public roads: - Between centers, towns, and rural residential areas and villages. Between centers, towns and industrial/ farming areas. Between residential areas and local industrial/commercial areas. Between large residential areas. Which provide linkages between a Class 2 and/or Class 1 routes. Which provide linkage between centers, towns, rural residential, industrial/farming areas and Class 2 or Class 1 routes.
District Collector	High levels of access and lower levels of mobility for lower traffic volumes of people, raw materials, manufactured goods, agricultural produce in rural and urban areas of local importance	Public roads: - Between villages, farming areas and scattered rural settlements and communities, which primarily serve local social services as well as access to markets. Within a commercial, residential, industrial areas. Linking Class 3 roads.
Access Roads	High access and very low mobility routes for the movement of people and goods within urban and rural areas.	Public roads: Within a residential community. From a Class 3 or 4 to a residential community. To provide direct access to industries and businesses. To provide access to specific destinations such as heritage sites, national parks, mines, forests etc.
Non-motorized access ways	Public rights of ways for non-motorized transport providing the basic and dedicated movement	Public right of way: To provide safe access and mobility for pedestrians, cyclists and animal drawn transport. For social, recreational and economic access.

As per RAL's RISFSA Road Classification Report, the latest version of the draft TRH26 (August 2012) South African Road Classification and Access Management Manual (RCAM) was introduced, which builds and expands on the RISFSA functional road classification system. The TRH26 RCAM Manual is to become the official requirement for road classification and access management and supersedes both the draft National Guidelines for Road Access Management in South Africa (COTO, 2005) and the Manual for the Redefinition of the South African Road Network (DOT, 2008). The RCAM Manual has made significant changes to the functional classification descriptions in Chapter 3 of the 2006 RISFSA. All six classes have been split into rural and urban classes with the following descriptions:

RURAL CLASSES	URBAN CLASSES
R1= Rural principal Arterial	U1= Rural principal Arterial
R2= Rural Major Arterial	U2= Rural Major Arterial
R3= Rural Minor Arterial	U3= Rural Minor Arterial
R4= Rural Collector Arterial	U4= Rural Collector Streets
R5= Rural local Arterial	U5= Rural local Streets
R6= Rural walkway	U6= Rural walkway

### 5.3.3 STATE OF ROADS AND STORMWATER

#### 5.3.3.1 ROADS

The total length of the road network under ownership of Ephraim Mogale Local Municipality is 1111, 9km, of which 974,9km are gravel and 114,3km are surfaced. This excludes roads owned by SANRAL, Province, District Municipality, and Private Roads. This translates to only 10, 3% of the network being surfaced and the rest of network, i.e. 89, 7%, being gravel. The breakdown of roads in terms of road surface and conditions is indicated in the Table 3.6.1 below.

Items	Total Lengths (Kms)	Lengths Conditions				
		Very Poor	Poor	Fair	Good	Very Good
Surfaced	140.3	15.6	23.4	60.9	23	17.4
Unsurfaced	1022.2	56.8	472.3	439.5	53.6	0.0
<b>Overall</b>	<b>1162.5</b>	<b>72.4</b>	<b>495.7</b>	<b>500.4</b>	<b>76.6</b>	<b>17.4</b>

#### 5.3.3.2 STORMWATER

Storm water structures were divided into the following three categories:

- Bridges / Culvert;
- Side Drains;
- Stormwater Pipes; and
- Kerb Inlets

Summary of the conditions of Stormwater Structures in Ephraim Mogale Local are summarized in the Table 3.7.1 below showing different storm-water structures within EPMLM.

Items			Condition Grading				
	Quantity	Unit measure	Very Poor	Poor	Fair	Good	Excellent
Bridges / Culverts	16	No	25.8%	20.2%	37.0%	9.0%	8.0%
Stormwater Pipes	21706	Length (m)	18.0%	22.0%	35.0%	20.0%	5.0%
Side Drains	30818	Length (m)	11.2%	23.0%	31.4%	30.0%	4.4%

Kerb Inlets	92	No	7.4%	14.7%	45.6%	29.4%	2.9%
-------------	----	----	------	-------	-------	-------	------

### 5.3.4 ROADS AND STORMWATER CHALLENGES

The Municipality faces a lot of challenges with regard to the provision and maintenance of Roads and Stormwater. The following are the challenges

- Planning data not available (RMS etc.)
- Aging infrastructure
- Huge backlog
- Lack of forward planning.
- Uncontrolled Storm water in villages
- Not enough equipment's for maintenance
- Limited budget for developing new infrastructure
- poor performance of Service providers

### 5.4 Waste Management

#### 5.4.1 Access and Backlogs

Provision of kerbside waste collection service once a week is currently done in Marble Hall (965 Household), Leeuwfontein (1380 Household), Leeuwfontein RDP (725 households), Elandskraal (2182 Households) and 367 Households with communal bins at Schoeman Farms

Total of 5619 households

Total households in municipal area - 32 284

Backlog: 26 665 Households.

#### 5.4.2 State of waste management

Disposal is done at one permitted landfill site in Marble Hall. Informal recycling is done on site and at source at the businesses in Marble Hall. Some volunteers are also recycling in Elandskraal and Matlelerekeneng. The current Integrated Waste Management Plan is outdated and there is a process to update and formalise the IWMP plan together with operational plans.

#### 5.4.3 State of Landfill Site

The Landfill site is situated in Marble Hall town. The current airspace will be enough for at least 09 years and closure will then be done thereafter. The site is receiving an estimate of 15600 tons of waste annually. There is no weighbridge at the landfill, waste is estimated per tonnage. Planning and procurement is on the way to install a weighbridge in the 16'17 financial year. The site is permitted and it is classified as a GMB landfill site. There is a proper access road, the site is adequately fenced and some infrastructure like site facility, offices and cloakrooms are available.

Daily compaction of disposed waste is challenging but the site is rehabilitated on an annual basis. Site is open to the public weekdays and Saturdays from 6 am till 6 pm. On Sundays the site is closed. A recent external compliance audit was done as per the WASTE act and permit. During the last compliance audit, the compliance was around 66% with the main challenge the monitoring of groundwater on the site. The groundwater monitoring started in September 2016 and will be done twice per annum as per the permit conditions of the landfill site. Annual Compliance audits are taking place and a Landfill site monitoring committee was established and it is functional. The disposal statistics is also reported monthly on the SA Waste Information system.

#### 5.4.4 Waste Management Challenges

Challenges – Small rural municipality with little resources and accessibility of areas makes it difficult to do proper collection and recycling. An outdated IWMP which makes planning difficult. There is also a need for a revenue collection strategy and recycling strategy which will be highlighted and discussed in the IWMP.